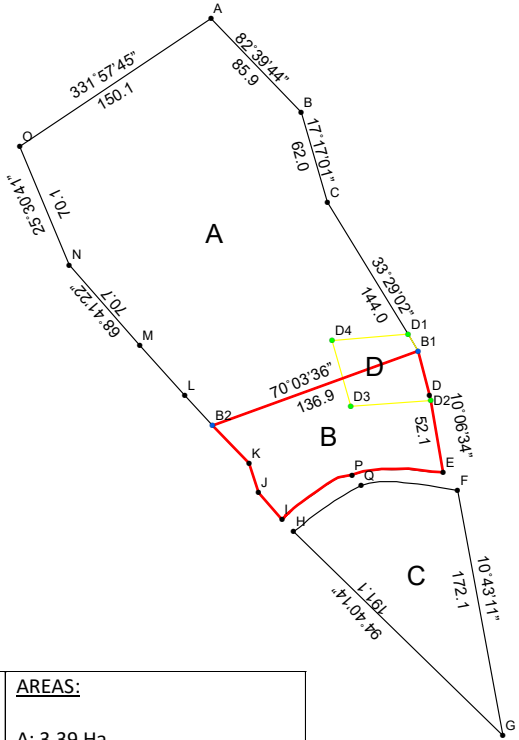


KERICHO/KAPSIMBIRI/682

COORDINATES LISTS			
POINT	Northings	Eastings	class of beacon
A	9919751.26	768175.83	beacon old
B	9919689.40	768235.50	beacon old
C	9919629.87	768252.95	beacon old
D	9919502.49	768320.31	beacon old
E	9919451.41	768329.23	beacon old
F	9919439.46	768338.93	beacon old
G	9919277.66	768368.85	beacon old
H	9919412.49	768230.45	beacon old
I	9919420.19	768222.75	beacon old
J	9919438.11	768207.30	beacon old
K	9919457.43	768201.11	beacon old
L	9919502.31	768158.58	beacon old
M	9919535.37	768128.89	beacon old
N	9919588.61	768082.27	beacon old
O	9919666.71	768049.56	beacon old
P	9919449.71	768269.03	beacon old
Q	9919442.91	768275.28	beacon old
D1	9919542.75	768306.24	no beacon
D2	9919498.98	768321.18	no beacon
D3	9919495.07	768268.37	no beacon
D4	9919538.56	768255.98	no beacon
B1	9919531.59	768312.78	beacon new
B2	9919482.32	768176.97	beacon new



BEARING, DISTANCES AND DIRECTION						
LINE	D	M	S	Distance	N_S	E_W
A-B	82	39	44	85.96	S	E
B-C	17	17	1	62.04	S	E
C-D	33	29	2	144.09	S	E
D-E	10	6	34	51.85	S	E
E-F	60	20	20	15.39	S	E
F-G	10	43	11	164.54	S	E
G-H	94	40	14	193.22	N	W
H-I	89	12	27	10.89	N	W
I-J	66	48	8	23.66	N	W
J-K	19	1	59	20.29	N	W
K-L	79	40	55	61.83	N	W
L-M	71	55	56	44.43	N	W
M-N	68	41	22	70.77	N	W
N-O	25	30	41	84.67	N	W
O-A	737	34	30	151.96	N	E

PLANNED BY: ORBITAL AFRICA LTD	CLIENT: AMIT BUTHDEV	AREAS: A: 3.39 Ha B: 0.81 Ha C: 0.93 Ha D: 0.24Ha <i>Units in Meters</i>
--	--------------------------------	--

1:5,000